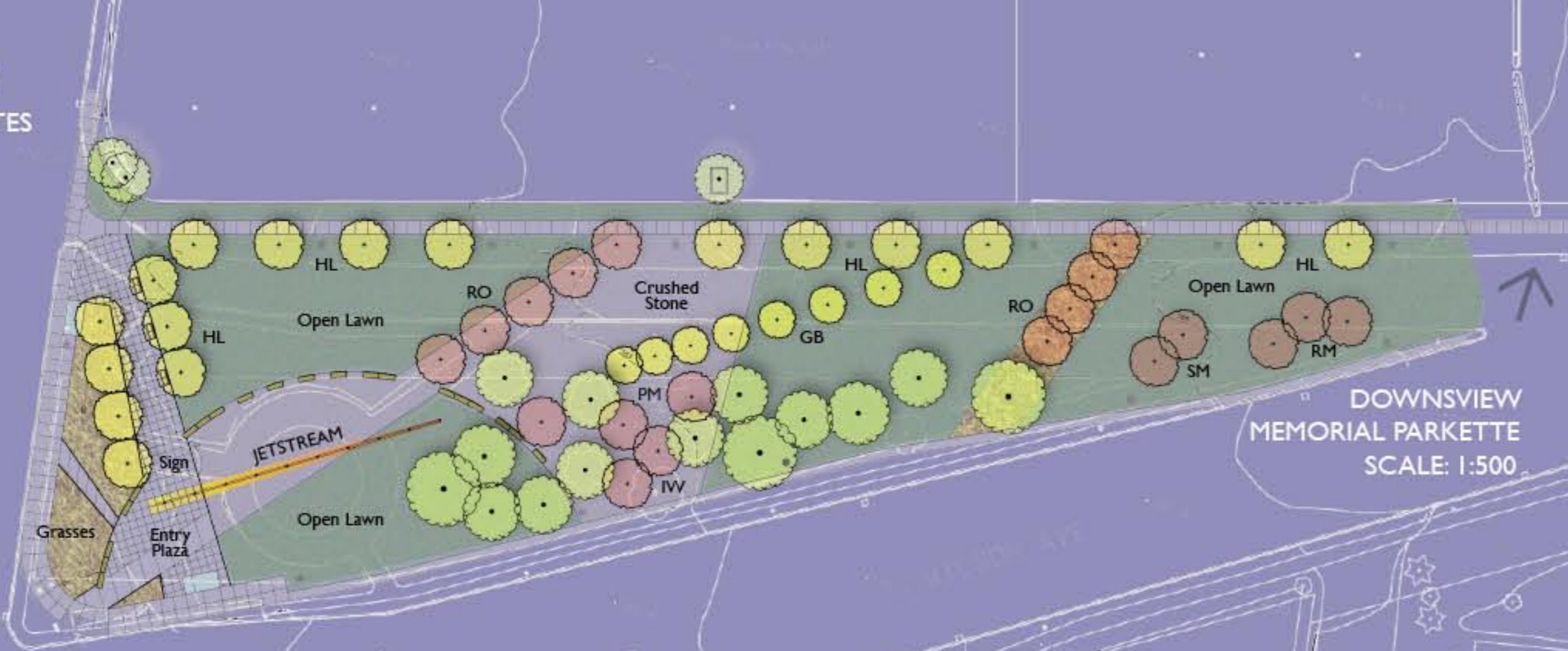


Downsview Memorial Parkette's design takes its cue from existing desire lines and activity at the intersection of Keele and Wilson. Footprints in the snow reveal pedestrian movement through the space accessing the retail centre from the street corner. A north/south plaza connects the bus shelters on Keele Street and Wilson Avenue. In addition to City benches beneath an allee of locusts, the plaza offers space for trash receptacles and newspaper boxes.

A curvilinear arrangement of stone benches within a granular paved surface provides a setting for the JETSTREAM art piece and functions as an informal congregation area for the users of the park. The stone benches also accommodate ample seating, viewing and playing chess. Granular mulch provides a ground cover below the mature Norway Maples allowing for further park activity, such as bocce, while minimizing park maintenance.



DOWNSVIEW MEMORIAL PARKETTE SCALE: 1:500

Landscape Palette

A bright burst of colour, composed of drought tolerant grasses and perennials highlights the corner of Keele and Wilson. The north and

west walkways are defined by Honeylocusts, while shade tolerant maples and ironwood are planted within the grove of existing Norway Maples.

Diagonal lines of Red Oak lead into the park from the north sidewalk and create a series of open spaces. Finally, the rhythm of the vertical

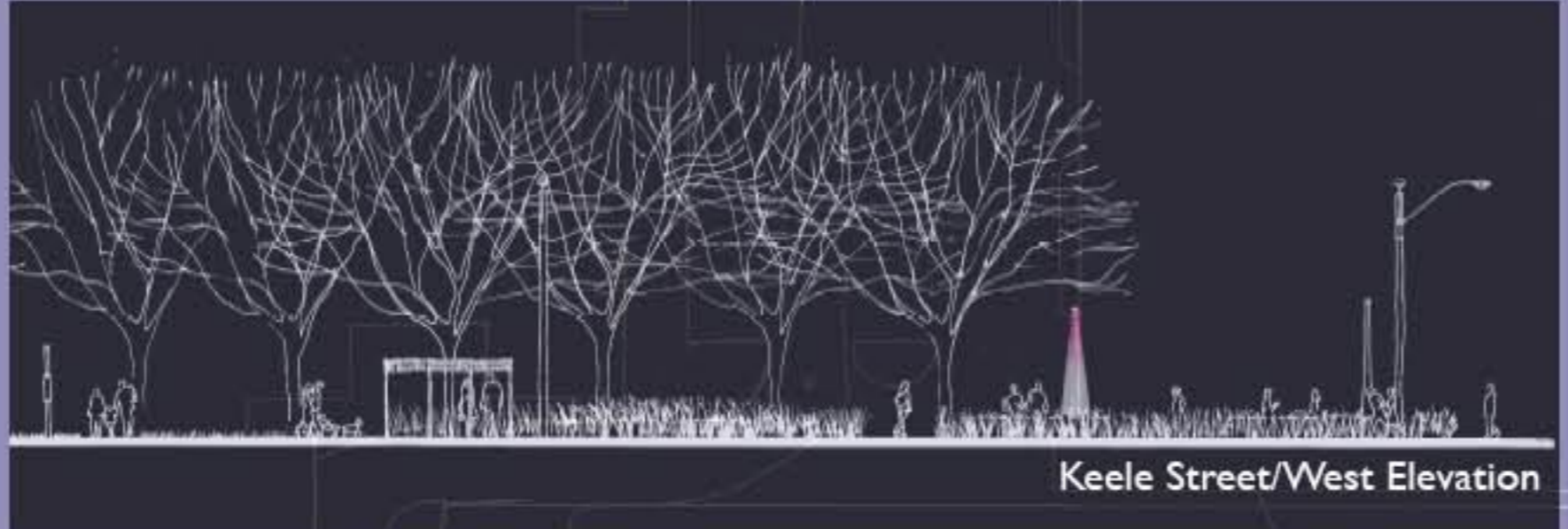
steel supports of the JETSTREAM continues with columnar Ginkgo trees which themselves are both durable and sculptural.

Deciduous Trees

- GB Ginkgo Biloba
- HL Honeylocust
- IW Ironwood
- PM Paperbark Maple
- RM Red Maple
- RO Red Oak
- SM Sugar Maple

Grasses/Perennials

- Black-eyed Susan
- Feather Reed Grass
- Purple Coneflower



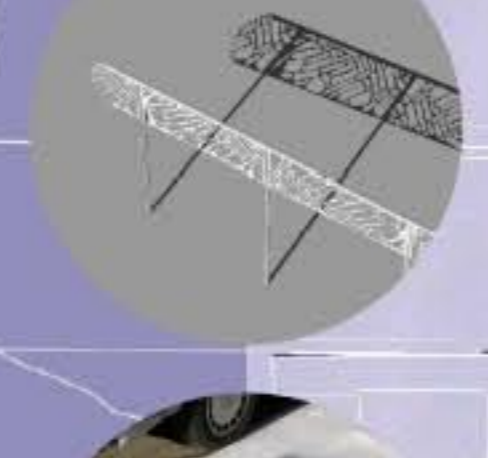
Downsview has played a key role in Canada's aircraft industry since 1928 when De Havilland Aircraft of Canada established its manufacturing facility and airstrip at Sheppard Avenue and Dufferin Street. Now known as Bombardier Aerospace, the company employs 2300 people, currently manufacturing 30 Global Express personal jets each year.

Many of Bombardier's employees have been with the company for decades and make the Downsview neighbourhood their home. The presence of this industry can be felt in the neighbourhood with the Downsview landing strip being used to test aircraft. Downsview's proximity to Pearson International Airport also contributes to the presence of activity in the skies above the area.

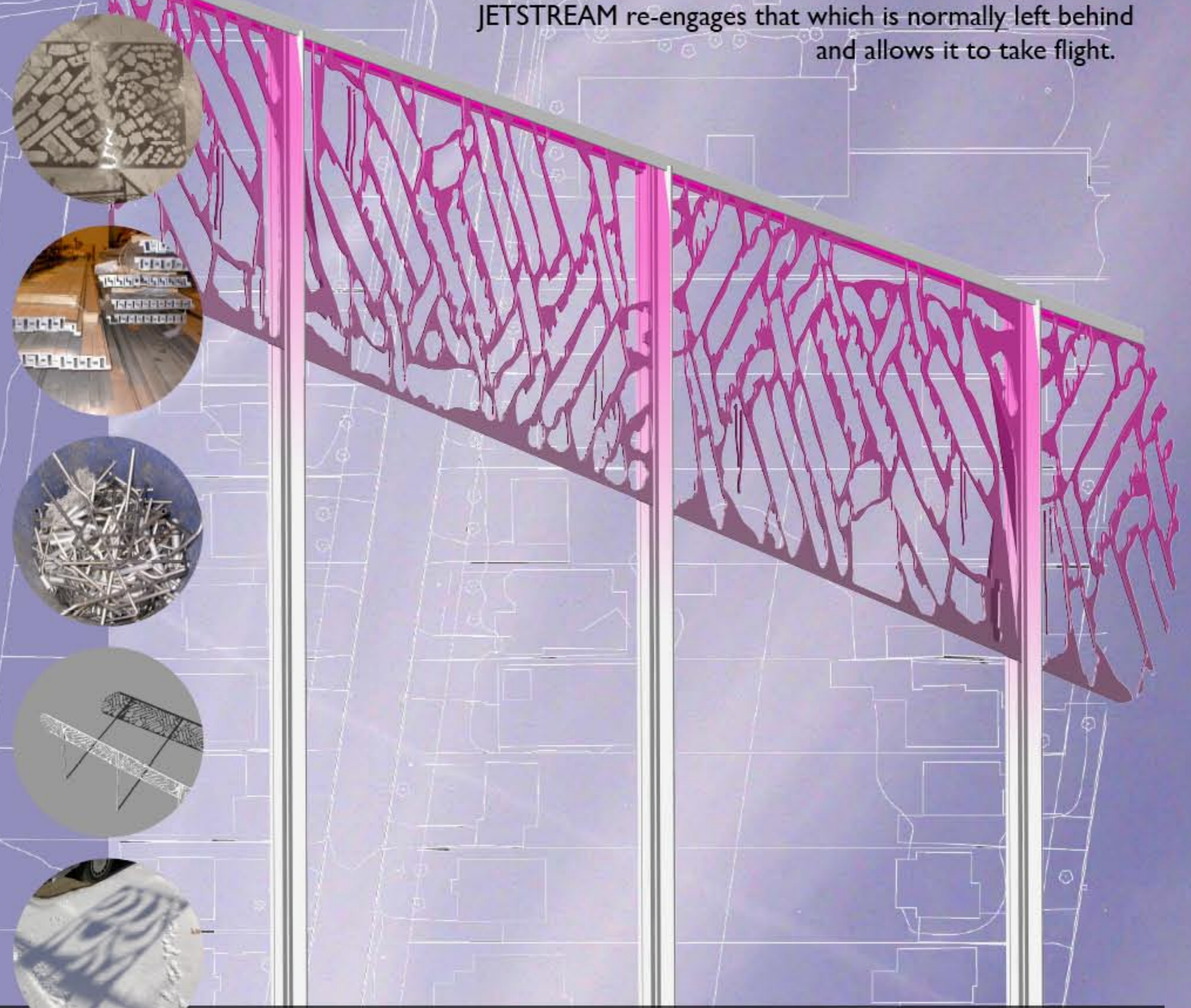
JETSTREAM will be built in partnership with Bombardier Aerospace. Using byproducts of Bombardier's manufacturing processes, aluminum panels will be recycled and mounted to vertical posts creating an elevated, tapered band rising from 14' to 20' through the park.

Chime elements, created from tubular titanium off-cuts (remains of the manufacturing of gas and hydraulic fluid lines) will be scattered within the panel openings along JETSTREAM. Air movement through the park will activate the chimes creating subtle but intriguing sounds which also mask the sound of nearby traffic.

Both sides of JETSTREAM will be illuminated with a strip of low voltage, low maintenance, colour changing LED lights. These will visually activate the surface of the panels at dusk. During the day, JETSTREAM will cast dynamic shadow patterns on the ground throughout significant portion of the park.



JETSTREAM utilizes byproducts of the aerospace manufacturing industry which are typically discarded or recycled. Referencing these origins and the ubiquitous conditions of accumulation in our consumer culture, JETSTREAM re-engages that which is normally left behind and allows it to take flight.



JET STREAM

Downsview Memorial Parkette

